

# STARGATE S11

From Aquarama creativity and innovation  
the future takes shape



AQUARAMA®  
CAR WASH SYSTEM



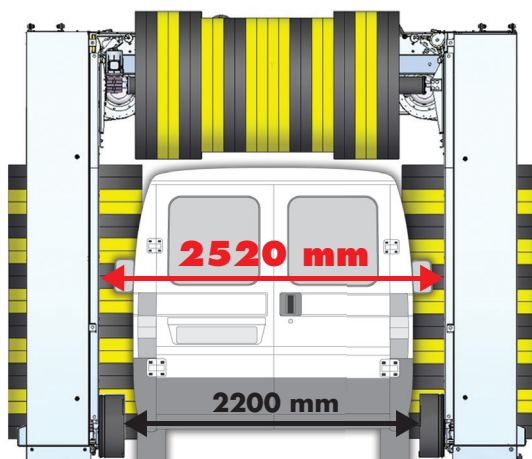
# STARGATE *S11*

- Innovative technological solutions
- Technology built to last
- High quality washing



**MORE SPACE FOR BIG VEHICLES** WIDE VEHICLE PASSAGE CAN BE INSTALLED IN SMALL WASH BAYS.

Washing width



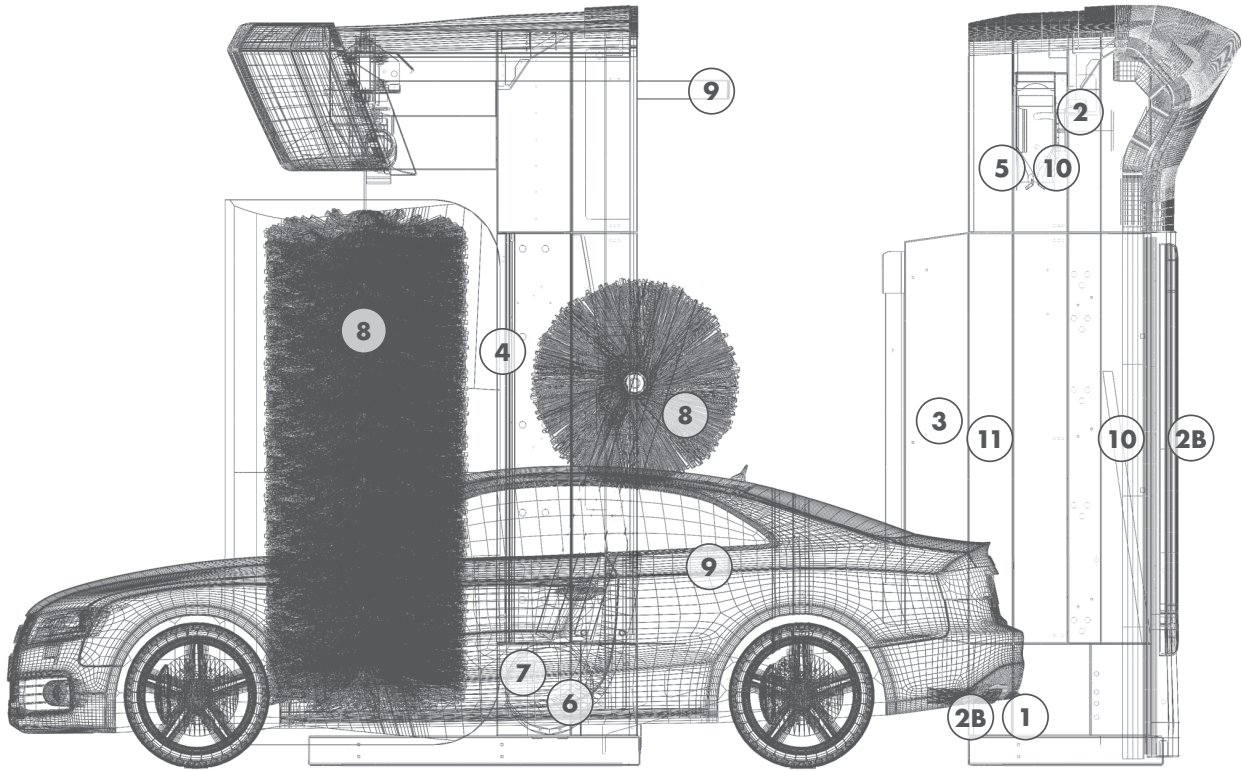
Available washing heights

2500 mm

2300 mm



# REDUCED TIME AND QUALITY MAINTAINING THE CORRECT PHILOSOPHY OF WASHING



- |             |                                   |             |             |
|-------------|-----------------------------------|-------------|-------------|
| <b>1</b> -  | Wheels                            | <b>6</b> -  | Rotating HP |
| <b>2</b> -  | Insects                           | <b>7</b> -  | Wash Wheels |
| <b>2b</b> - | Insects (with Photocells'Barrier) | <b>8</b> -  | Brushes     |
| <b>3</b> -  | Foam                              | <b>9</b> -  | Wax         |
| <b>4</b> -  | Side High Pressure                | <b>10</b> - | Drying      |
| <b>5</b> -  | Top High Pressure                 | <b>11</b> - | Polish      |



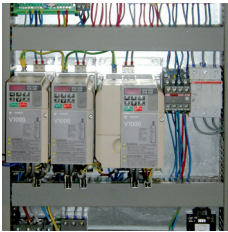
## LOW MAINTENANCE THANKS TO SELF-LUBRICATING MATERIALS

Innovative materials for silent movements requiring no lubrication or maintenance.



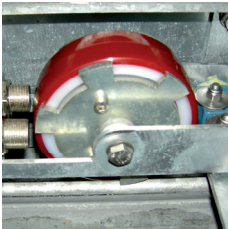
# STARGATE S11

## STANDARD FULL SPECIFICATIONS



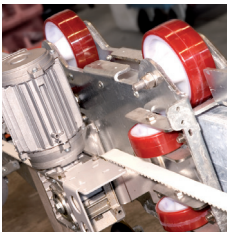
### FOUR FREQUENCY CONVERTERS

The four frequency converters allow a rapid smooth pass, for a precise wash on every part of the vehicle.



### DRIVE AND LIFT SENSOR

Measurement of movements with two sensors for maximum precision and reliability.



### LOW MAINTENANCE THANKS TO SELF-LUBRICATING MATERIAL

Innovative materials for silent movements requiring no lubrication or maintenance.



### LED TRAFFIC LIGHTS INTEGRATED IN THE GANTRY LEG

Wide traffic light with LEDs, sliding display. Perfect also in bright light conditions.

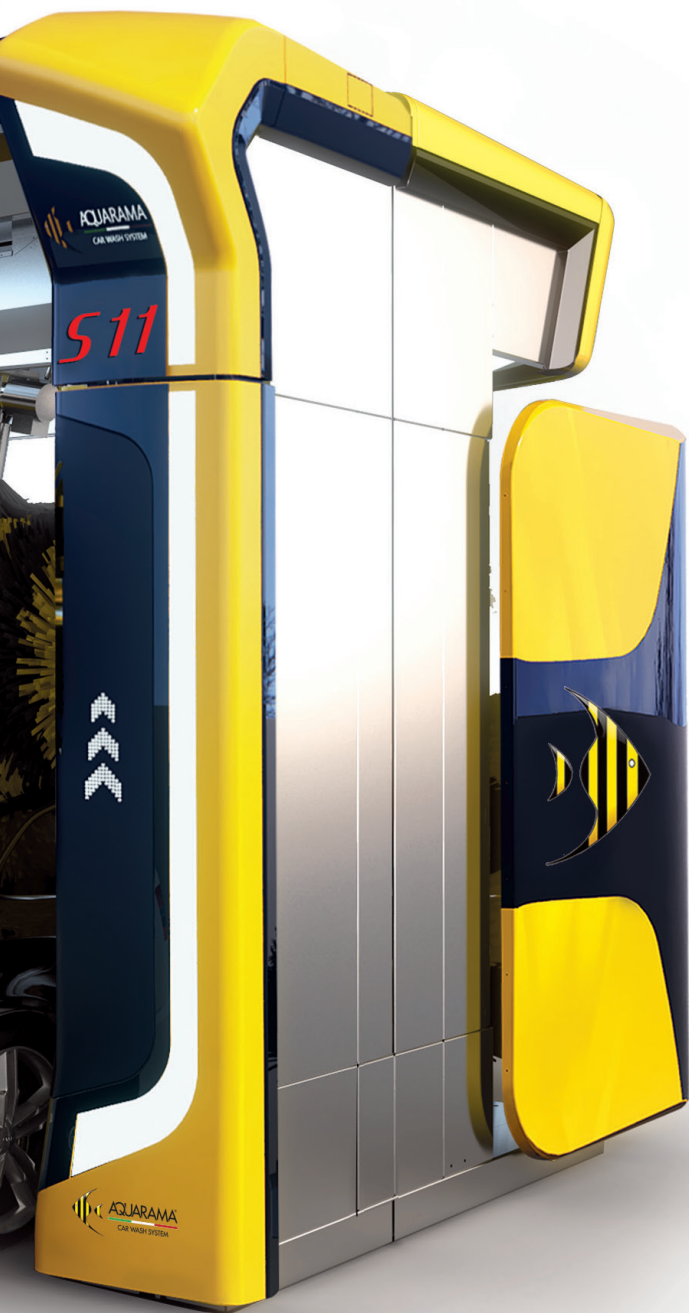


### STAINLESS STEEL WHEEL WASHER

The reversal of rotation and inclination of the brush allows a thorough cleaning of the rims of every dimension.







The gantry model shown is equipped with optional

### Colours available



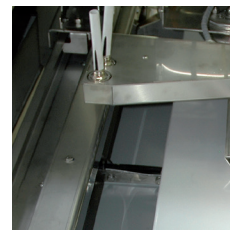
### PERFECT DRYING IN ONLY ONE PASSAGE

Stainless steel horizontal blade following the vehicle profile, tilting to 3 positions. Inclined side vents. Four electric blowers 5,5 kW/each.



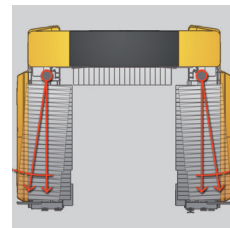
### SECURITY

Lifting belt loosening alarm. Blade anti-fall locking system on drying.

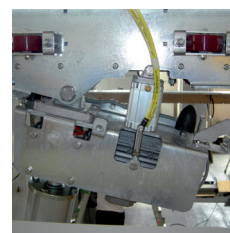


### SENSITIVE SIDE BRUSHES

Tilting side brushes, electronically controlled, perfectly adapting to the profile of the car.



### TILT AND LOCK



### WAX APPLICATION

The wax is applied using a contour following wax arch and laterally delivered by nozzles positioned close to the vehicle sides, for a perfect water-repellent effect.



## High pressure system



### WHEELS

Tilting wheel washer with fully integrated rotating high pressure, for a thorough cleaning of rims, wheel arches and sills.



### HORIZONTAL CONTOUR FOLLOWING

High pressure on 2 positions tilling blade for a more efficient dirt removal



### FIXED LATERAL

Located on intermediate mobile arch. Advanced position for a perfect pre-wash.

## High pressure pumps system

Choices of 84 or 126 liters high pressure pumps system, for a powerful pre-wash.

Available in insulated outdoor cabinet or in frame for technical room.



CABINET



FRAME

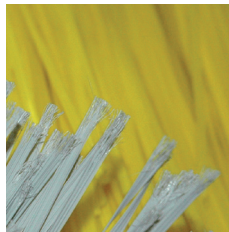
## Brushes available

### POLYETHYLENE



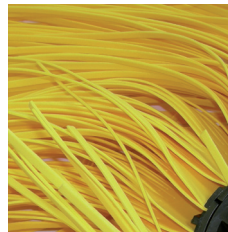
The polyethylene brush guarantees a very good result with a moderate investment.

### FILOK



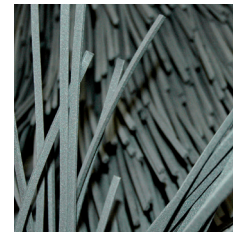
Lighter and delicate when touching the car body. Large and flat the FilOK allows to accurately rub the surface.

### CARLITE PROFILE



New, light and softer in contact with the bodywork. HP prewash recommended.

### CARLITE PROFILE STRING



Unlike Carlite Profile, they have smaller strings for higher cleanliness of details. Recommended with high pressure.

### TEXTILE



Extremely thorough washing and exceptional polishing from this premium option. Long lasting. HP prewash recommended.

## Self service system - control units

The control unit has been designed for simple and intuitive use. Wide liquid crystal display. Secure payment system for 24 hours use.

**The operator can configure each passage to create personalized programs.**

**Possibility for the customer to add any optionals to the selected basic wash.**

## PHOTOCELLS' BARRIER (Optional)

Thanks to the photocells' barrier it is possible to detect any vehicle's shape, optimizing the horizontal brush contact and the drying blade pass.



- **High precision of detection**

Automatic detection of particular shapes (I. E. Pickup, Skibox, Lightbars, etc.)

- **High Speed Detection**

First pass of Drying Gantry up 20 m/min

- **High Smoothness of Functioning**

Drying blade - Horizontal brush Horizontal High Pressure



### It accepts



Touch



Smart Coin Card  
with a value  
or a program



Banknotes



Coins and/or  
tokens



Certified payment system  
for self-service banking  
transactions with bank card  
and Smartphone.



### It delivers



Receipt (no fiscal)



Smart Coin Card  
Self Service Top Line only



Coins  
and/or tokens  
2 hoppers



### Structure

- Hot dip galvanized and painted steel structure
- ABS plastic claddings (optional)
- Direct gantry drive with frequency converter
- High resistance rivets "aeronautic" type
- Stainless steel bolts

### Vertical brushes

- Hot dip galvanized steel single cross beam
- Electrical positioning drive
- Double cross over on front and back of the vehicle
- Double inclination and locking by cylinder
- Electronic power control

### Horizontal brush

- Electrical uplift with frequency converter
- Electronic power control
- Stainless steel sliding guides
- Fall prevention system and belts loosening detection

### Drying

- Contour following 3 positions tilting stainless steel horizontal blade
- Electric uplift with frequency converter
- Stainless steel sliding guides
- Side drying with 2 electric blowers
- Fall prevention system (with spring-loaded hook) and belts loosening detection

### Standard equipment

- Hydraulic system with dedicated solenoid valves and piping
- Shampoo dosing pump
- Wax dosing pump
- 2 single festoon supply systems (wall hanging)
- Control panel in dedicated wall box
- Fully integrated preset self-service kit

## TECHNICAL FEATURES

### Dimensions Stargate S11 (in millimetres)

Washing height	2.300	2.500
Machine height	*3.300 (3.180)	*3.500 (3.380)
Machine width	*3.715 (3.600)	
Washing width	2.520	
Machine depth	*3.200 (2500)	
Machine weight	1.800 + 1.700	1.900 + 1800
Distance between rails	3.000 (2.800 upon demand)	
Rails length	12.000	

\*Max dimensions with ABS claddings

( ) Dimensions with standard aluminium cladding

### Hall or washing bay dimensions for vehicles 5 meters long (in millimetres)

Height	*3.400 (3.300)	*3.600 (3.500)
Width	**4.100 (4.600)	
Length	*11.700 • **11.450 • (11.300) •**(10.750)	

\*Dimensions with ABS claddings

\*\*With optional safety anti-crush device.

( ) Dimensions with standard aluminium cladding

### Technical data sheet

Drive speed	m/min	0-22
Water pressure	Bar/l	3-5
Air pressure	Bar	8
Voltage	V/Hz	400 3/N/PE 50
Total power	kW	25
Control voltage	V	24
Drying power	kW	4x5,5

### High pressure pumps (optional)

Water high pressure	Bar	80
---------------------	-----	----

Data are merely indicative and are not bindin.

AQUARAMA Srl  
Località Piano, 38 - 12060 Novello (CN) - ITALIA  
Tel. +39 0173 776822 - Fax +39 0173 792501 - info@aquarama.it



Certificato  
Nr 50 100 7925



**AQUARAMA®**

CAR WASH SYSTEM

www.aquarama.it

Follow us on

